

Location Map



ASHIYANA
Gurupura, Kaikamba



CHAITANYA HOMES
Vidyagiri, Moodabidri



ARNAVA HOMES
NITK, Surathkal

IN CLOSE PROXIMITY

- Canara School - 900mts
- Urwa Market - 1.1km
- Bhat's Nursing Home - 1.2km
- Urwa Marigudi - 1.1km
- Mangala Stadium - 1.1km
- Ladyhill Church - 1.4km
- Sulthan Battery - 1.4km
- Bharath Mall - 2.1km

*A Future
full of Goodness*



Promoters & Developers



Shantheri Building,
Chilimbi 2nd Cross
Mangalore - 575006

Kuchigudde Complex,
Old Post Office Road,
Surathkal - 575014

For Details Call: +91 74117 09999/ +91 83100 20804
Email: arnavabuilders@gmail.com

Architects

**GOKULRAJ
ASSOCIATES**

architects + interior + project management consultants

Mangalore

Arnav
Residency

Matadakani, Mangalore



Arnava Residency

Matadakani, Mangalore



A home is a personal space that we all need to feel safe, secure and comfortable. It's where we recharge ourselves to face the rigours of life outside. Arnava Residency is designed to give you the upbeat confidence you need to live life to the fullest. Situated in the peaceful locality of Matadakani in Mangalore, here you can retreat to a life of comfort.

The four-storey apartment complex is beautifully designed using modern space saving architecture. The interiors are well planned for ease of living. On offer are 36 spacious 1BHK, 2BHK and 3BHK apartments featuring the best of amenities and facilities for good living. It will indeed be the address you will be proud to call your own.

Arnava Residency is promoted by Arnava Builders & Developers - property developers of repute with a passion for professionalism and quality. The promoters' track record of excellence and their personalized service makes Arnava Residency a natural choice for discerning customers like you.

So choose to make your new home at this exclusive new address.



PEACE AND
COMFORT FOR
HAPPY LIVING



Amenities

DESIGNED WITH YOU IN MIND.



Indoor Games



CCTV



Children's Play Area



Fully Equipped
Gymnasium



Solar Lighting
for Common Area



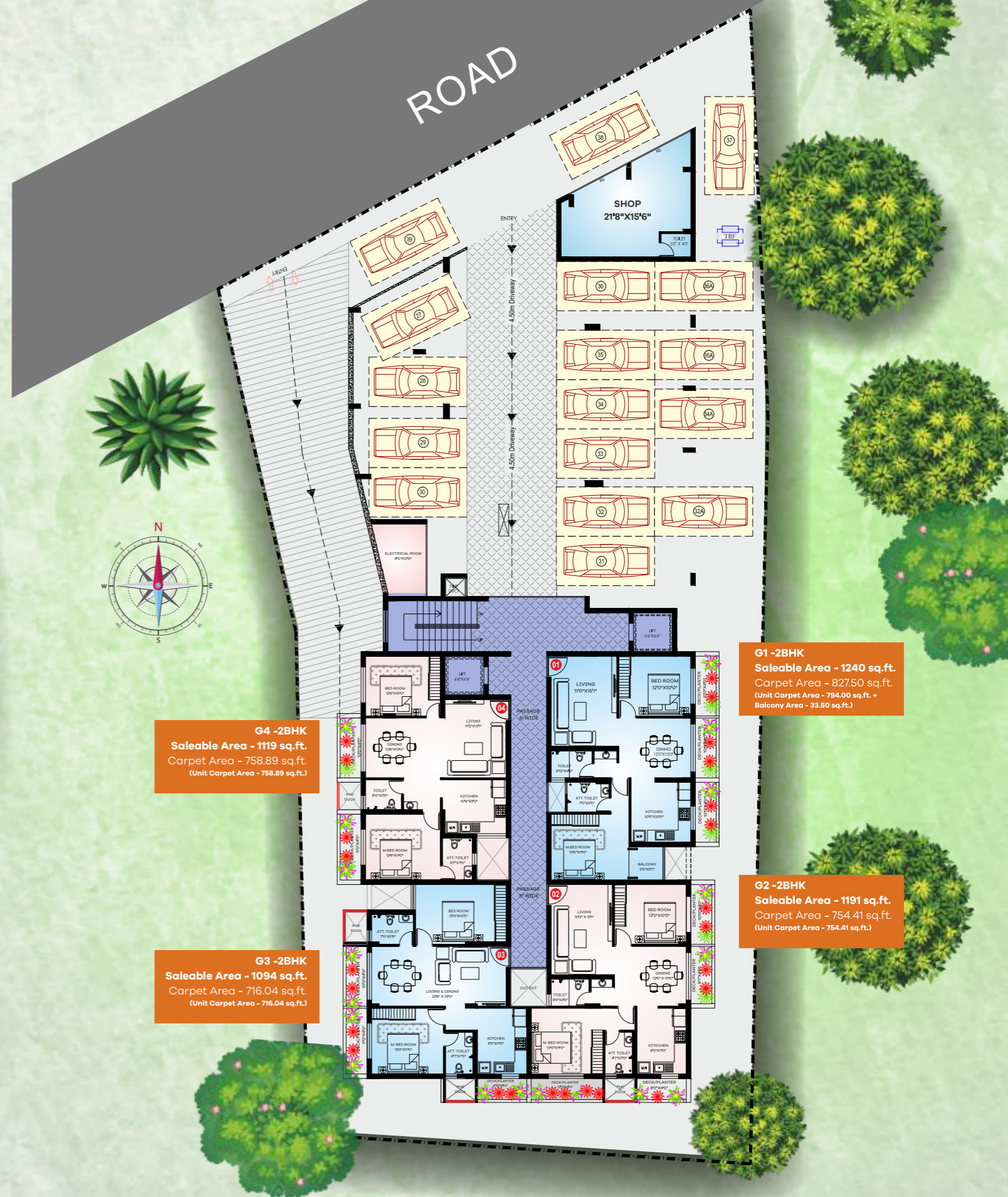
Multi-Purpose
Party Hall



Fire Fighting
System

Arnav
Residency
Matadakani, Mangalore

Ground Floor Plan



G1 -2BHK
Saleable Area - 1240 sq.ft.
Carpet Area - 827.50 sq.ft.
(Unit Carpet Area - 794.00 sq.ft. +
Balcony Area - 33.50 sq.ft.)

G4 -2BHK
Saleable Area - 1119 sq.ft.
Carpet Area - 758.89 sq.ft.
(Unit Carpet Area - 758.89 sq.ft.)

G3 -2BHK
Saleable Area - 1094 sq.ft.
Carpet Area - 716.04 sq.ft.
(Unit Carpet Area - 716.04 sq.ft.)

G2 -2BHK
Saleable Area - 1191 sq.ft.
Carpet Area - 754.41 sq.ft.
(Unit Carpet Area - 754.41 sq.ft.)

101 - 2BHK
 Saleable Area - 1106.00 sq.ft.
 Carpet Area - 837.81 sq.ft.
 (Unit Carpet Area - 699.90 sq.ft. +
 Balcony Area - 137.91 sq.ft.)

102 - 2BHK
 Saleable Area - 1225.00 sq.ft.
 Carpet Area - 939.79 sq.ft.
 (Unit Carpet Area - 788.26 sq.ft. + Balcony Area - 151.53 sq.ft.)

103 - 2BHK
 Saleable Area - 1254.00 sq.ft.
 Carpet Area - 964.02 sq.ft.
 (Unit Carpet Area - 808.07 sq.ft. + Balcony Area - 155.95 sq.ft.)

104 - 2BHK
 Saleable Area - 1203.00 sq.ft.
 Carpet Area - 937.72 sq.ft.
 (Unit Carpet Area - 772.39 sq.ft. +
 Balcony Area - 165.33 sq.ft.)

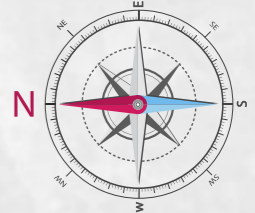
108 - 3BHK
 Saleable Area - 1344.00 sq.ft.
 Carpet Area - 1030.18 sq.ft.
 (Unit Carpet Area - 899.85 sq.ft. +
 Balcony Area - 130.33 sq.ft.)

107 - 1BHK
 Saleable Area - 676.00 sq.ft.
 Carpet Area - 501.78 sq.ft.
 (Unit Carpet Area - 463.45 sq.ft. +
 Balcony Area - 38.33 sq.ft.)

106 - 2BHK
 Saleable Area - 1132.00 sq.ft.
 Carpet Area - 859.47 sq.ft.
 (Unit Carpet Area - 769.39 sq.ft. +
 Balcony Area - 90.08 sq.ft.)

105 - 2BHK
 Saleable Area - 1109.00 sq.ft.
 Carpet Area - 845.79 sq.ft.
 (Unit Carpet Area - 728.79 sq.ft. +
 Balcony Area - 117.00 sq.ft.)

Arnav
 Residency
 Typical
 Floor Plan



Highlights

CIVIL WORKS

- Reinforced Cement concrete framed Structure
- External walls of Laterite Stone & Internal Walls of concrete Blocks
- Compound wall/ Gate & Security Cabin

FLOORING

- Entrance Lobby, Corridors - Superior quality Tiles
- Staircase - Granite Flooring
- Apartment flooring with vitrified Tiles

DOORS & WINDOWS

- Main Door of superior quality Hard wood frame with veneer finish shutter & Melamine polish
- Internal doors of superior quality engineered Wood
- High Grade UPVC sliding shutters and MS grill for windows
- Superior designer lock for all doors

ELECTRICAL

- Electrical wires of Polycab or Anchor or Equivalent make
- Conduit provision for TV and Telephone cable
- Conduit provision for AC points in all Bedrooms
- Conduit provision for Geyser points in all bathrooms
- MESCOM power 5KW for 3BHK & 3KW for 2BHK
- Modular electrical switches of reputed make

KITCHEN/UTILITY

- Stainless steel sink on granite counter
- All fittings will be Jaguar or equivalent make
- Wall cladding upto 2 feet above the granite counter
- Washing Machine point in utility area

PLUMBING & TOILET TILES

- Hot and cold mixer unit for all toilets
- Glazed tiles for wall cladding upto 8 feet height
- All plumbing lines will be pressure tested PVC pipes of heavy gauge
- All sunken slabs under the toilet floor will undergo waterproof treatment
- White colour sanitaryware of CERA or equivalent make
- Provision for exhaust fan in toilet

